

Areas to investigate

KS2 progress

- Progress in mathematics was significantly above average and in the highest 10%.

KS2 attainment

- In 2018, reading, writing and mathematics attainment of the expected standard was at or above national for the middle prior attainment group.
- In 2018, 68% of pupils achieved the expected standard in reading, writing and mathematics, 3 percentage points above the national proportion. This difference was not statistically significant.
- The three-year average reading attainment score (100.3) was in the bottom 10%.

KS1 attainment

- In 2018, reading and writing attainment of the expected standard was above national for the disadvantaged group.

Phonics in 2018

- There were no meaningful trends or differences for this measure.

Behaviour

- There were 2 permanent exclusions in 2016/17. There was also 1 in 2015/16 and 2 in 2014/15. The national average in each of these years was zero.
- The rate of total fixed term exclusions was above national for three years (2014/15 to 2016/17). In 2016/17, the rate of total fixed term exclusions (2.44%) was above the national average for schools with a similar level of deprivation (0.99%). The rate of repeat exclusions was above national for three years (2014/15 to 2016/17). In 2016/17, the rate of repeat exclusions (1.71%) was above the national average for schools with a similar level of deprivation (0.45%).

School context in 2018

Phase of education: Primary

Headteacher: Julie Berrow

Pupils: 414

Gender: Mixed

Deprivation Quintile: Highest 20% (0.5)

Local authority: Birmingham

Admissions policy: Not applicable

Ages: 4-11

Denomination: Does not apply

Special needs provision: ASD, SEMH

Ever 6 FSM %: 68.4

English additional language %: 60.0

SEN support %: 13.5

SEN with EHC plan %: 0.5

Ethnicity

- The largest ethnic groups are: White - any other White background (5.4%), Black or Black British - Caribbean (7.6%), Black or Black British - African (50.1%), Black or Black British - any other Black background (5.9%), Any other ethnic group (5.1%).
- This school has 13 out of 17 possible ethnic groups. The average number of groups for this phase of education is 9.

Number on roll

- There was nothing significant to report.

Girls

- The percentage of girls in year 6 (37%) was lower than all other year groups.

Disadvantaged

- The school was in the top 20% of all schools for the proportion of FSM (68.4%).
- The percentage of FSM across all years was variable: year 1 (57%), year 2 (64%), year 3 (62%), year 4 (88%), year 5 (77%), year 6 (86%).
- There were three children looked after in the school.

English as an Additional Language

- The school was in the top 20% of all schools for the proportion of EAL (60.0%).
- The percentage of EAL in year 1 (73%) and year 4 (68%) was higher than all other year groups.
- The percentage of EAL in year 2 (51%) was lower than all other year groups.
- There was a larger than average increase in the percentage of EAL pupils between 2017 and 2018.

School context 2018

Special Educational Needs

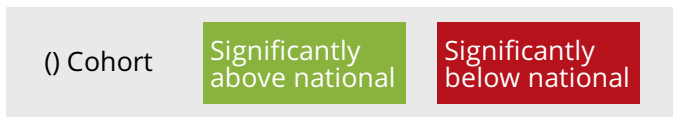
- There was nothing significant to report for this group.

Prior Attainment

- Pupil prior attainment was well below the national comparator for the following: Reading (Year 3, Year 5, Year 6), Mathematics (Year 5, Year 6)

Relative progress for the past three years

Progress quintiles based on rank of progress score

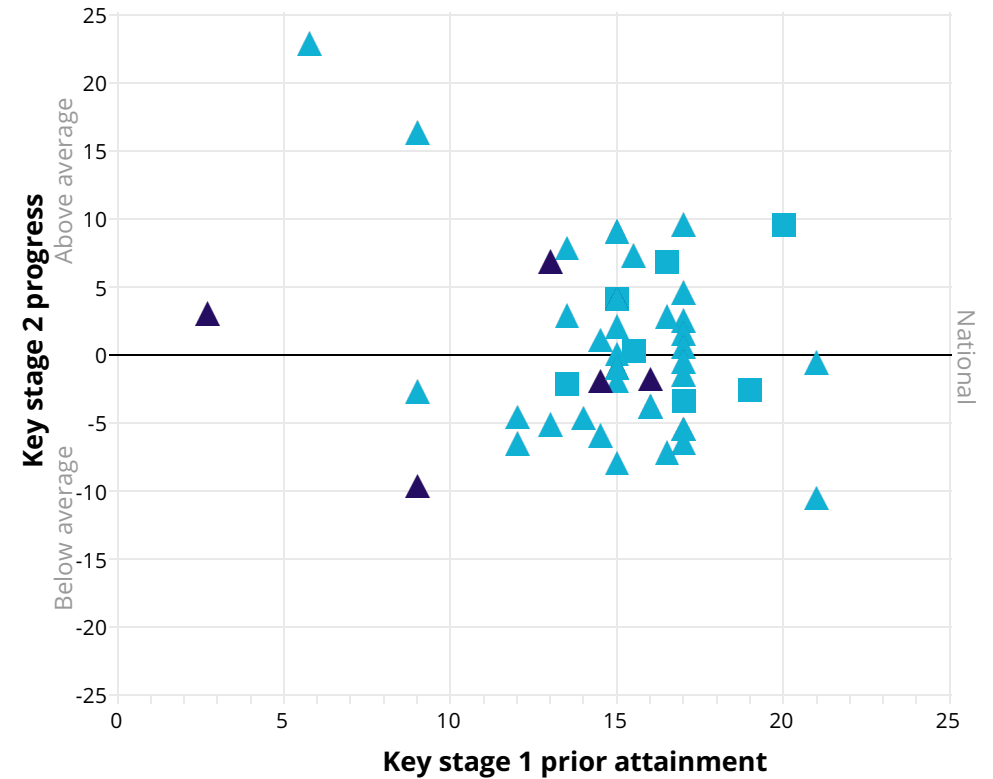
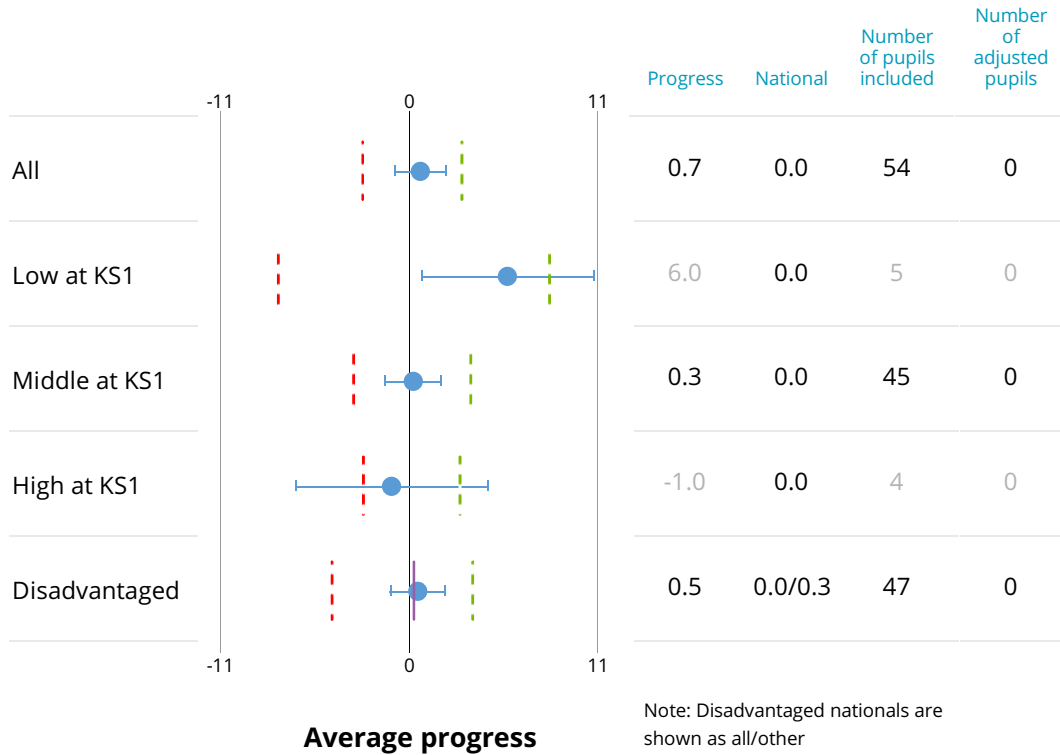


			Reading					Writing					Mathematics										
			Bottom 20%					Bottom 20%					Bottom 20%					Top 20%					
			Q5	Q4	Q3	Q2	Q1	Q5	Q4	Q3	Q2	Q1	Q5	Q4	Q3	Q2	Q1	Q5	Q4	Q3	Q2	Q1	
Overall	2016	(44)	Significantly below national					(46)						(46)	Significantly below national								
	2017	(51)	Significantly below national					(51)						(51)		Significantly below national							
	2018	(54)						(54)						(54)									Significantly above national
Low at KS1	2016	(5)						(7)						(7)									
	2017	(10)						(10)						(10)									
	2018	(5)						(5)						(5)									
Middle at KS1	2016	(32)						(32)						(32)									
	2017	(31)						(31)						(31)									
	2018	(45)						(45)						(45)									Significantly above national
High at KS1	2016	(7)						(7)						(7)									
	2017	(10)						(10)						(10)									
	2018	(4)						(4)						(4)									
Disadvantaged	2016	(36)	Significantly below national					(38)						(38)	Significantly below national								
	2017	(38)		Significantly below national				(38)						(38)									
	2018	(47)						(47)						(47)									Significantly above national

Notes: Statistical significance for disadvantaged pupils is against the national for other pupils. Change in methodology or calculations is indicated by a dotted line. Quintiles for 2018 are based on adjusted progress scores Previous years are based on unadjusted. Significance is only flagged for cohorts greater than 10. For cohorts of 10 or less information is greyed out. For further information on methodology see www.gov.uk/government/collections/using-ofsted-inspection-dashboard

Reading progress in 2018

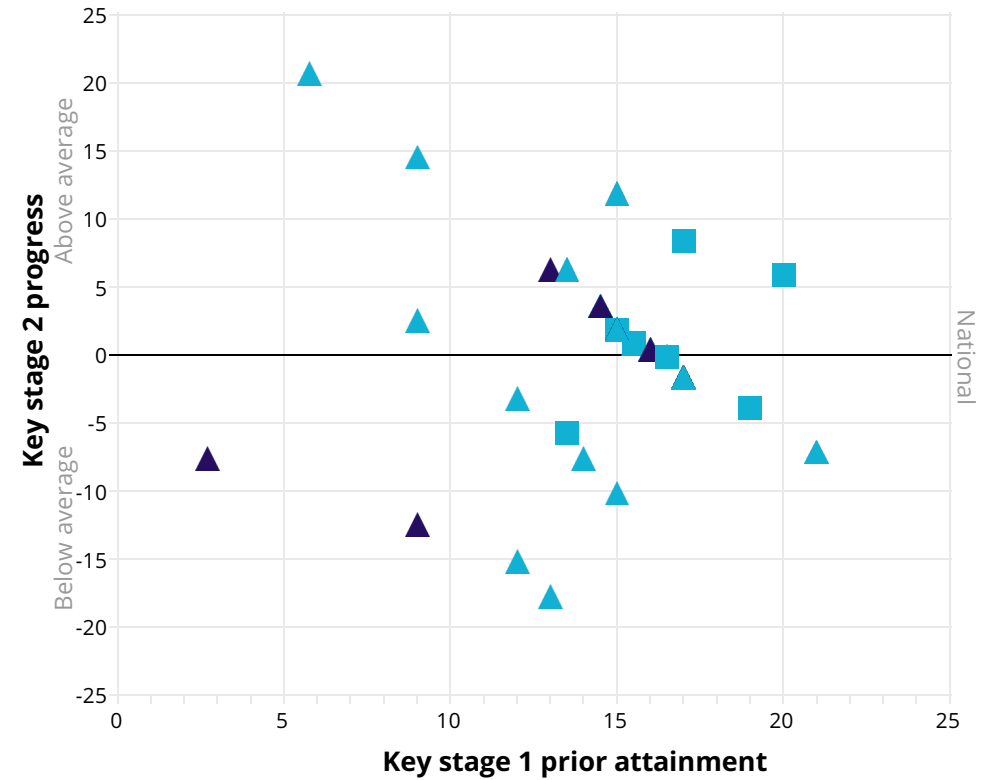
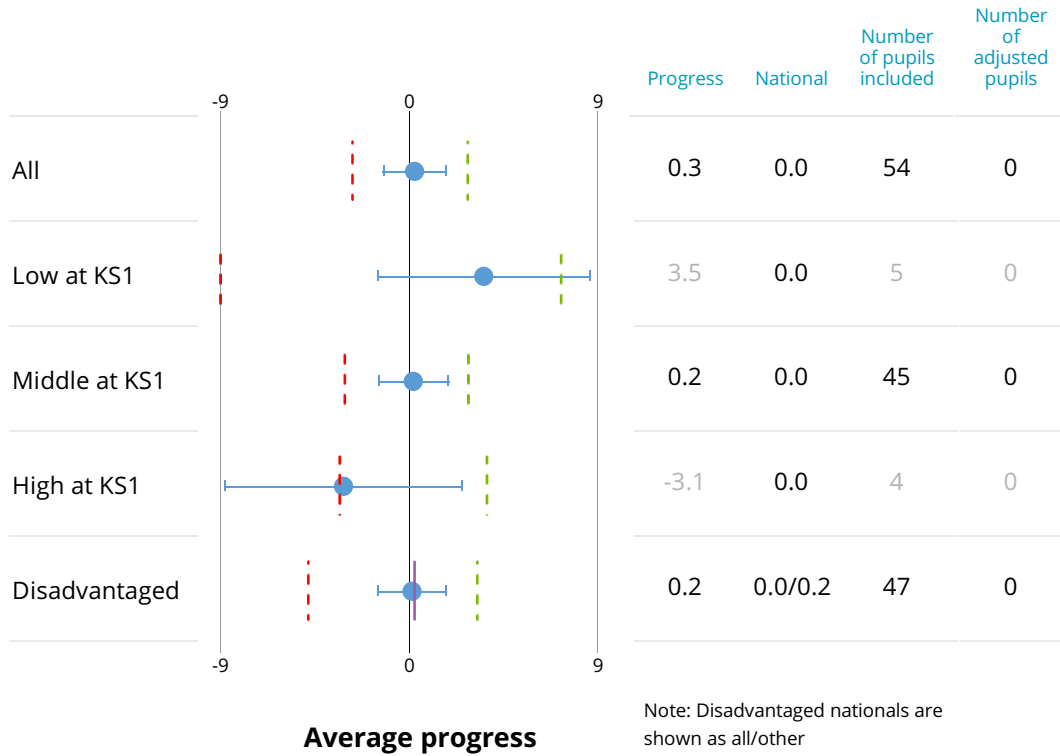
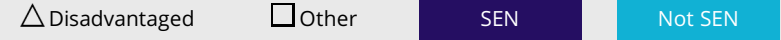
Reading progress scatterplot



Notes: Progress measures are based on adjusted progress scores. Significance is only flagged for cohorts greater than 10. For cohorts of 10 or fewer, information is shown in grey. Prior attainment is based on overall KS1 attainment. For further information on methodology see www.gov.uk/government/collections/using-ofsted-inspection-dashboard

Writing progress in 2018

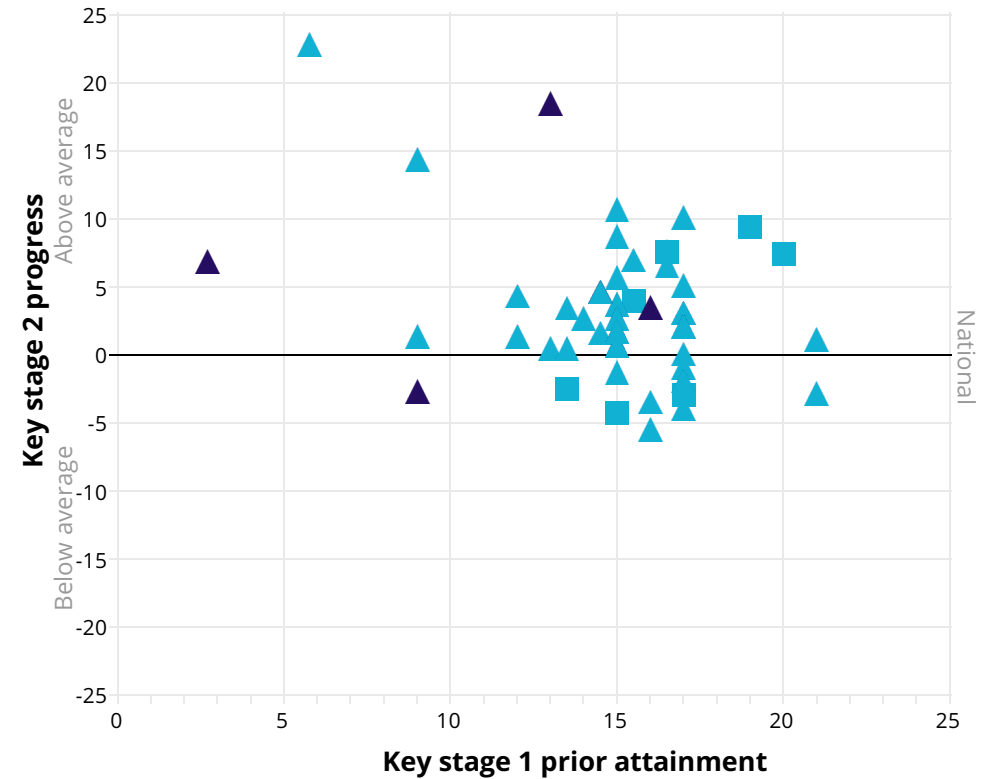
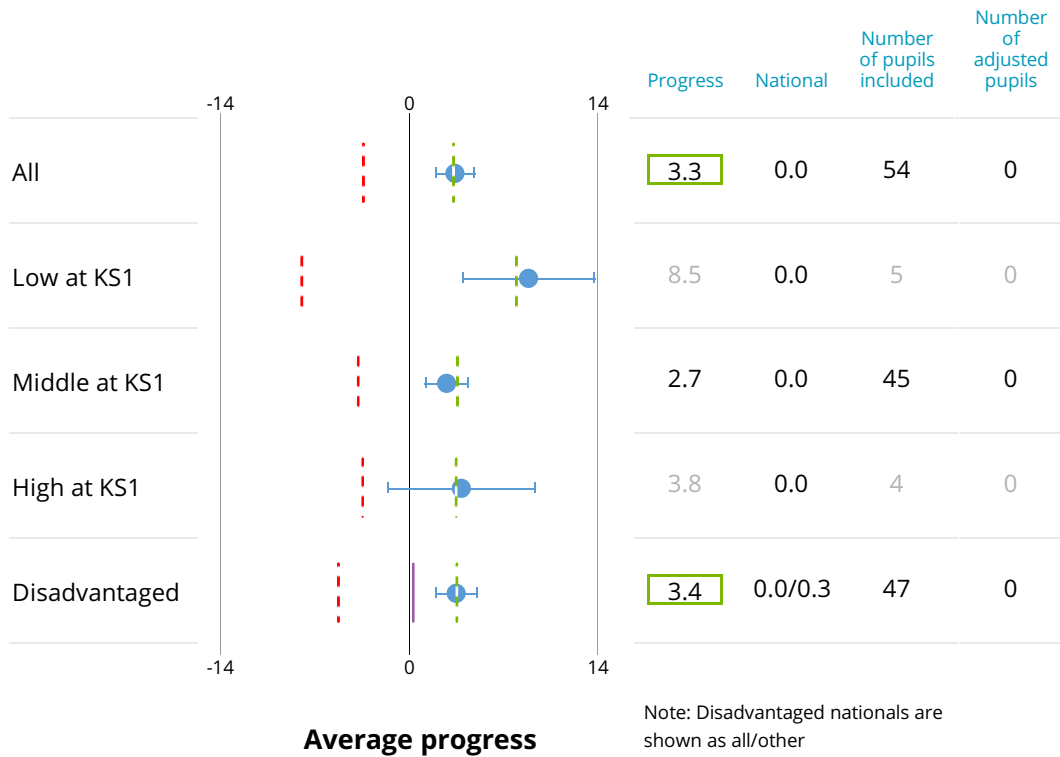
Writing progress scatterplot



Notes: Progress measures are based on adjusted progress scores. Significance is only flagged for cohorts greater than 10. For cohorts of 10 or fewer, information is shown in grey. Prior attainment is based on overall KS1 attainment. For further information on methodology see www.gov.uk/government/collections/using-ofsted-inspection-dashboard

Mathematics progress in 2018

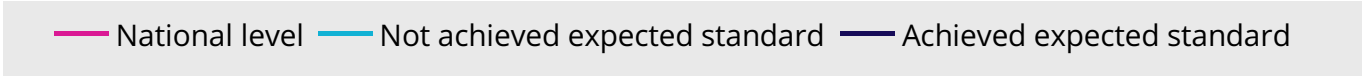
Mathematics progress scatterplot



Notes: Progress measures are based on adjusted progress scores. Significance is only flagged for cohorts greater than 10. For cohorts of 10 or fewer, information is shown in grey. Prior attainment is based on overall KS1 attainment. For further information on methodology see www.gov.uk/government/collections/using-ofsted-inspection-dashboard

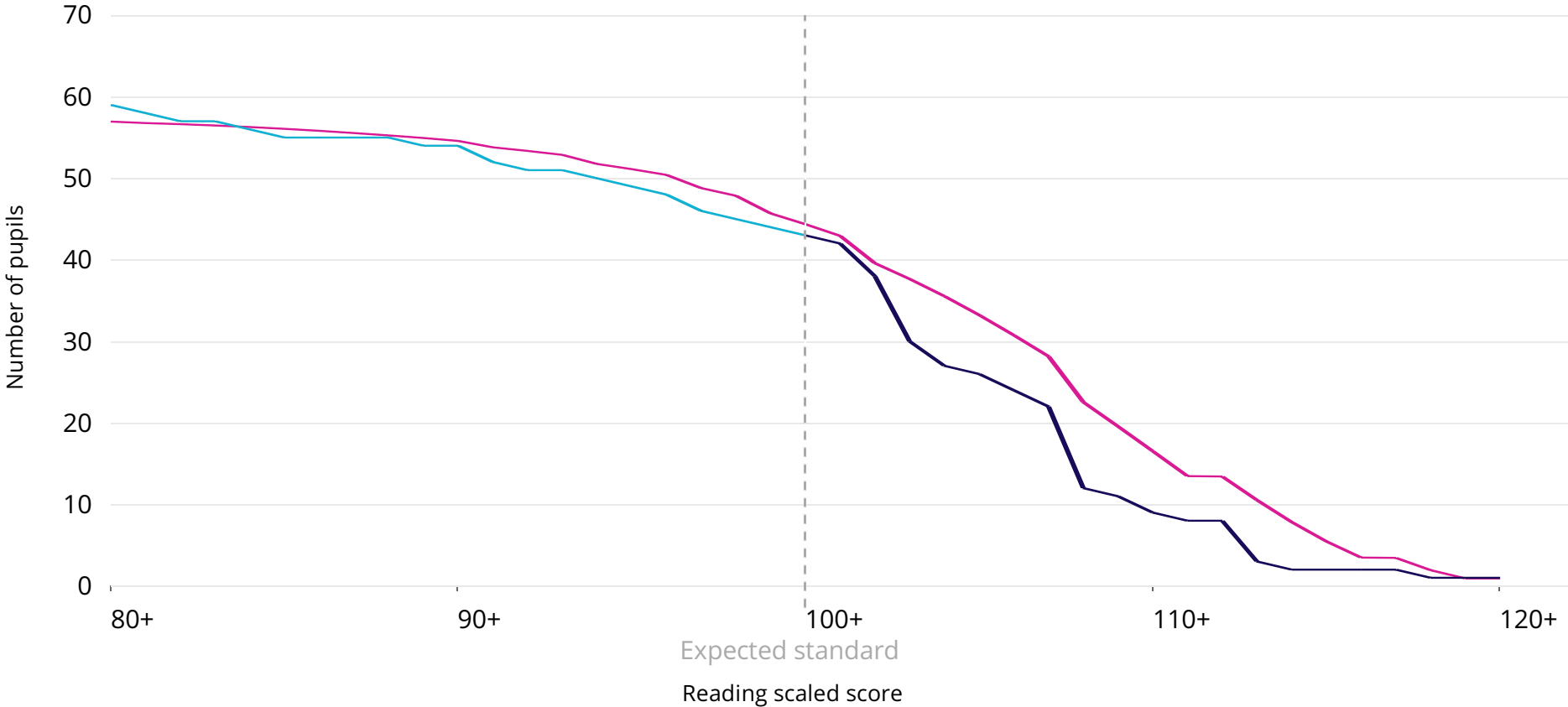
Reading scaled scores 2018

This chart shows the distribution of total marks achieved by pupils in the school compared to the national.



Cohort = 59 One pupil relates to 1.7 percentage points.

In 2018, 73% of pupils achieved the expected standard, 2 percentage points below the national. This difference was not statistically significant.



Notes: The plotted national line is the national reading percentage multiplied by the school reading attainment cohort at each average scaled score interval. For further information on methodology see www.gov.uk/government/collections/using-ofsted-inspection-dashboard

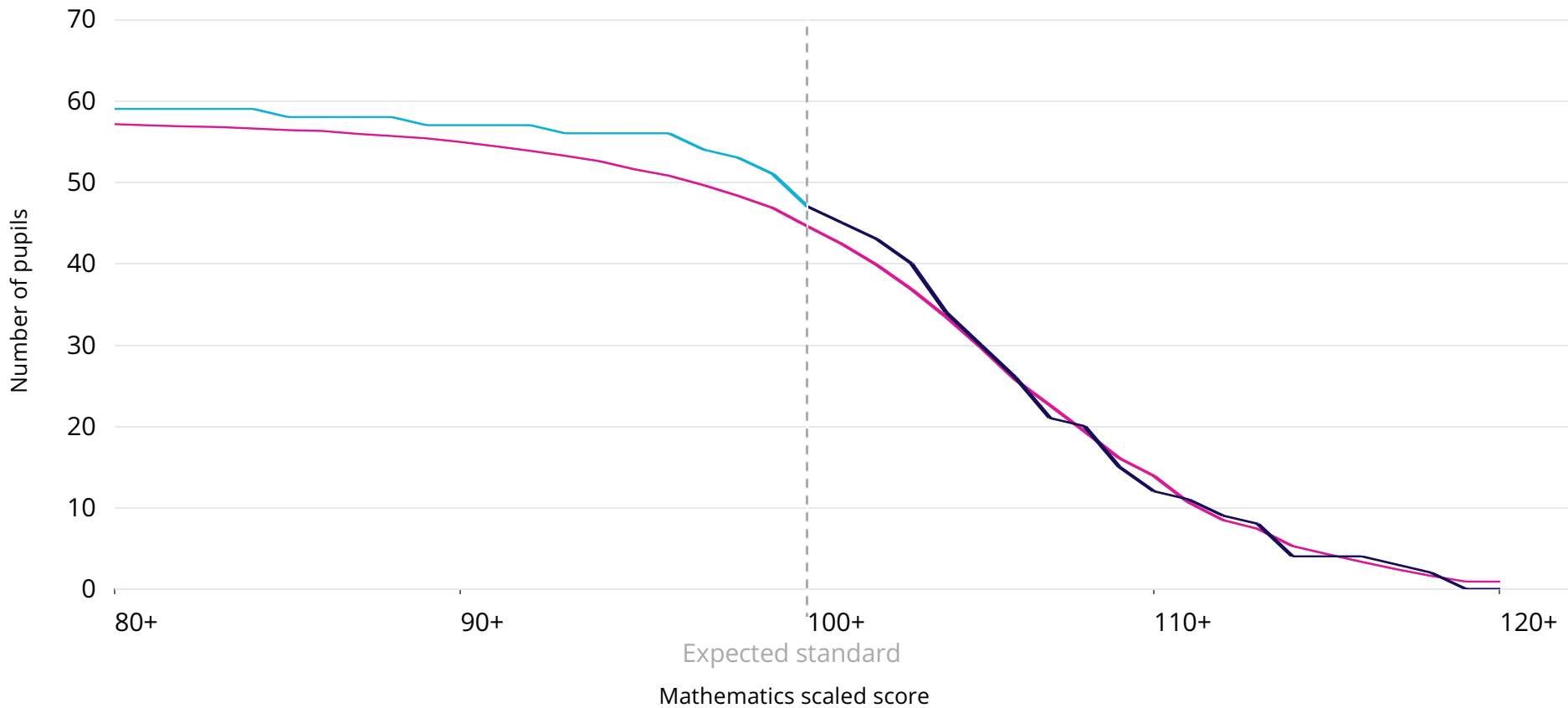
Mathematics scaled scores 2018

This chart shows the distribution of total marks achieved by pupils in the school compared to the national.

— National level
 — Not achieved expected standard
 — Achieved expected standard

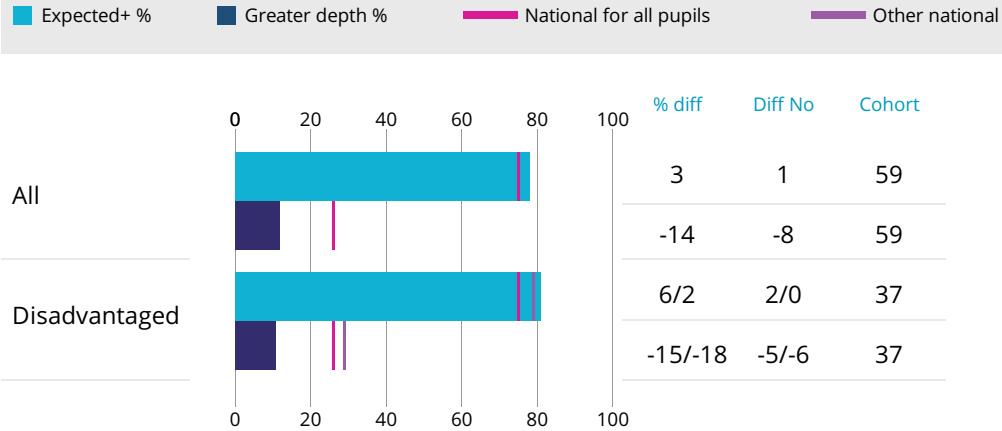
Cohort = 59 One pupil relates to 1.7 percentage points.

In 2018, 80% of pupils achieved the expected standard, 4 percentage points above the national. This difference was not statistically significant.

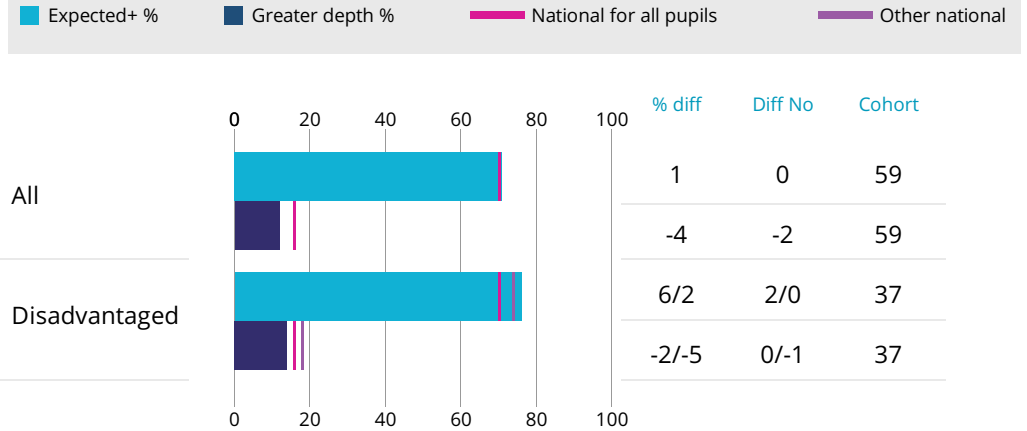


Notes: The plotted national line is the national mathematics percentage multiplied by the school mathematics attainment cohort at each average scaled score interval. For further information on methodology see www.gov.uk/government/collections/using-ofsteds-inspection-dashboard

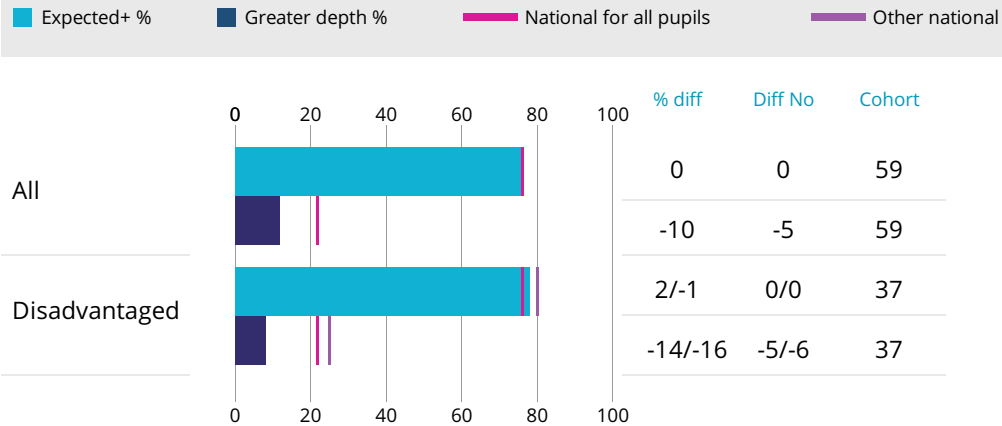
Reading



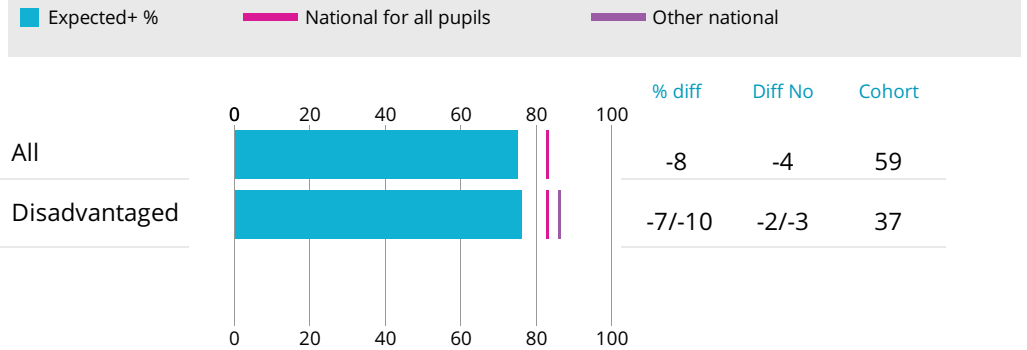
Writing



Mathematics



Science



Note: 'Diff no' value shows the number of pupils that the difference between school and national represents, and is always rounded down to a whole number. Disadvantaged nationals are shown as all/other (other relates to pupils who are not defined as disadvantaged). For science the only outcome of the teacher assessment was whether pupils met the expected standard. For further information on methodology see www.gov.uk/government/collections/using-ofsted-inspection-dashboard

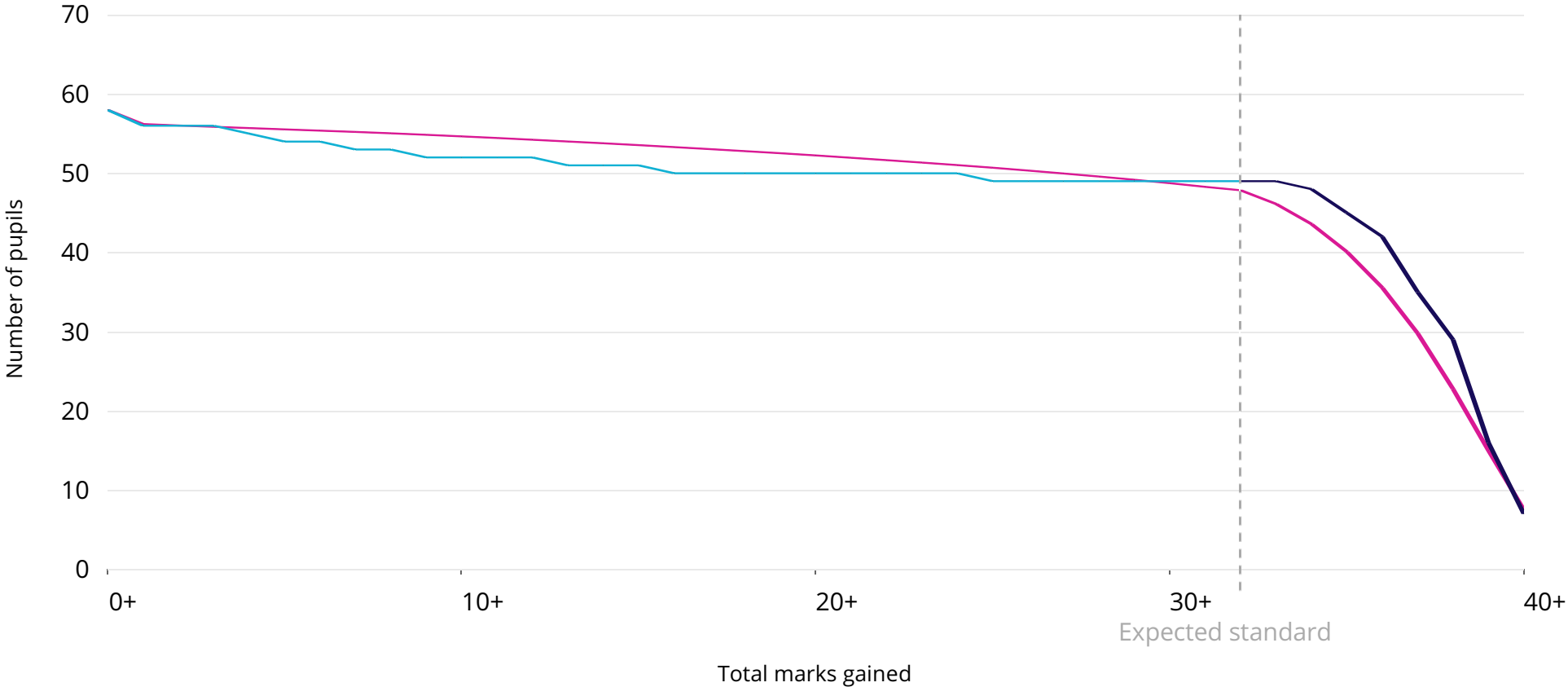
Year 1 phonics marks 2018

This chart shows the distribution of total marks achieved by pupils in the school compared to the national.

— National level
 — Not achieved expected standard
 — Achieved expected standard

Cohort = 58 One pupil relates to 1.7 percentage points.

In 2018, 84% of pupils achieved the expected standard, 2 percentage points above the national proportion. This difference was not statistically significant.



Notes: The plotted national line is the national phonics attainment percentage at each phonics mark multiplied by the whole school phonics attainment cohort. The expected standard for phonics is 32+. For further information on methodology see www.gov.uk/government/collections/using-ofsted-inspection-dashboard